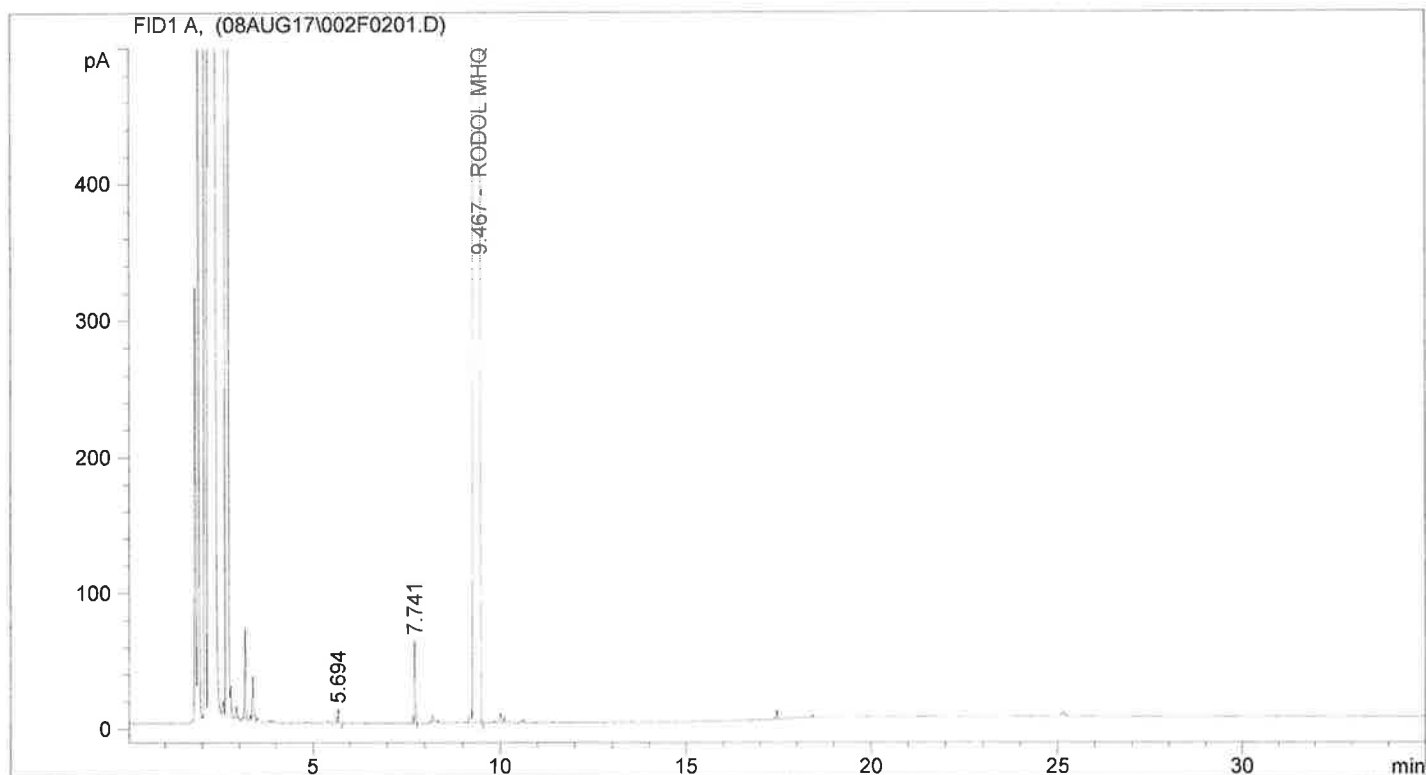


```

=====
Injection Date   : 8/8/2017 5:04:35 PM      Seq. Line :    2
Sample Name     : 1b                        Location  : Vial 2
Acq. Operator   : linda                    Inj       :    1
Acq. Instrument : GC System                 Inj Volume: 1 µl
Method          : C:\HPCHEM\2\METHODS\MHQ.M
Last changed    : 7/12/2017 8:54:18 AM by angie
2-Methoxy Hydroquinone (Rodol MHQ)
=====

```



```

=====
                          Area Percent Report
=====

```

```

Sorted By           :      Signal
Calib. Data Modified :      Tuesday, July 11, 2017 10:36:10 AM
Multiplier          :      1.0000
Dilution            :      1.0000
Sample Amount       :      1.07300e-1 [ng/ul]   (not used in calc.)
Use Multiplier & Dilution Factor with ISTDs

```

Signal 1: FID1 A,

Peak #	RetTime [min]	Type	Width [min]	Area [pA*s]	Area %	Name
1	5.694	BB	0.0326	21.24123	0.01732	?
2	7.741	BB	0.0299	114.22321	0.09311	?
3	9.467	VB S	0.0764	1.22537e5	99.88957	RODOL MHQ

Totals : 1.22672e5

Results obtained with enhanced integrator!

```

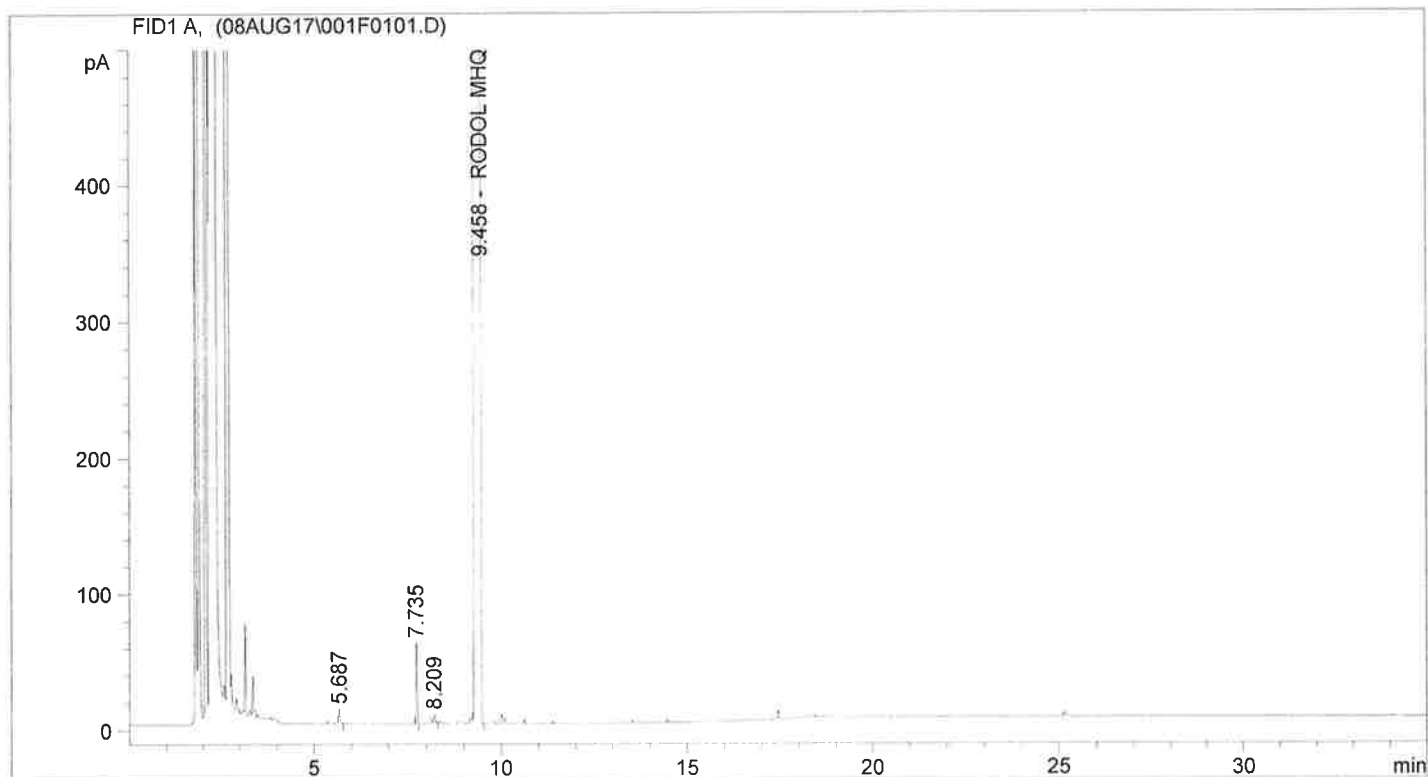
=====
*** End of Report ***
=====

```

```

=====
Injection Date   : 8/8/2017 3:44:19 PM      Seq. Line   :    1
Sample Name     : 1a                        Location    : Vial 1
Acq. Operator  : linda                      Inj        :    1
Acq. Instrument : GC System                 Inj Volume  : 1 µl
Method         : C:\HPCHEM\2\METHODS\MHQ.M
Last changed   : 7/12/2017 8:54:18 AM by angie
2-Methoxy Hydroquinone (Rodol MHQ)
=====

```



```

=====
                          Area Percent Report
=====

```

```

Sorted By           :      Signal
Calib. Data Modified :      Tuesday, July 11, 2017 10:36:10 AM
Multiplier          :      1.0000
Dilution            :      1.0000
Sample Amount       :      1.06700e-1 [ng/ul]   (not used in calc.)
Use Multiplier & Dilution Factor with ISTDs

```

Signal 1: FID1 A,

Peak #	RetTime [min]	Type	Width [min]	Area [pA*s]	Area %	Name
1	5.687	BB	0.0329	22.34554	0.01899	?
2	7.735	BB	0.0302	112.59886	0.09570	?
3	8.209	BV	0.0519	23.53462	0.02000	?
4	9.458	VB S	0.0769	1.17502e5	99.86531	RODOL MHQ

Totals : 1.17661e5

Results obtained with enhanced integrator!

```

=====
*** End of Report ***
=====

```